



INTERIORS & GRAPHICS

design portfolio
selections 2016 thru 2020



Gensler
Cafe/Kitchen
Charlotte, NC

FULL TIME
2019

HUNTON

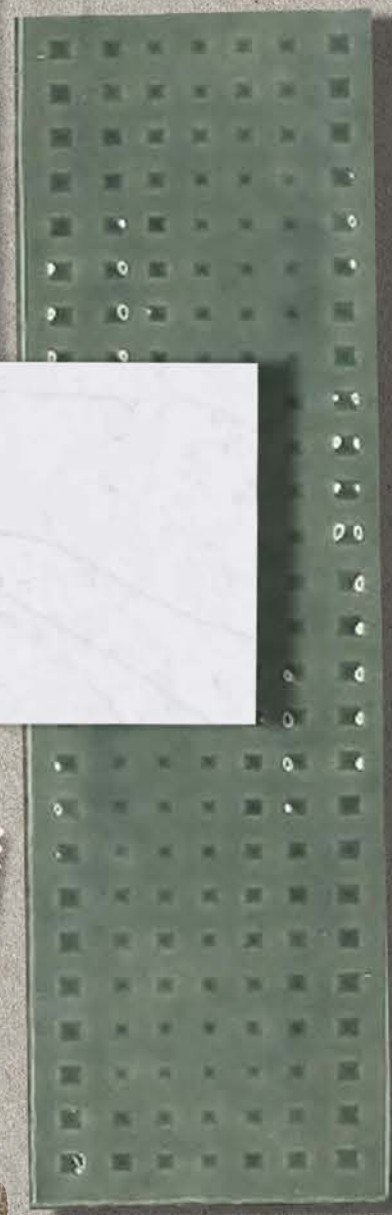
ANDREWS & KURTH
renderings & interiors

For this project, I was primarily responsible for the initial schematic redesign phase of this cafe area my roles included designing possible

layouts, creating schematic design presentations, and coordinating F&FE, and correcting creating documents in Revit.

The ultimate goal was to provide a space that gave employees a sense of calm, while maximizing on the green scenic view already in place. All furniture, finishes, and appliances were also replaced. Illustrations were all done in Enscape for Revit & Photoshop





PANTONE
Cool Gray 1
R 218 G 217 B 214

Moodboard

HUNTON
ANDREWS & KURTH
continued

Continuing with furniture and finishes, this moodboard shows the initial thought process behind the space. A relaxing break room with plenty of natural light. Taking advantage of the extensive natural view from the existing windows. The client suggested that they wanted to

experiment with something new, and refreshing. This board includes a final sketch of the layout for the floor plan, with ample seating, space, and a double height island with a lowered counter for seating.

Perkins+Will

Duke Fertility Center
Durham, NC

INTERNSHIP
2019

DUKE REI

renderings & interiors

In this project, I was involved in the initial schematic design. My roles included correcting markups given in Revit, while having input in the layout and design of waiting area, and aiding in furniture selection.

I participated in pin-up sessions and created the schematic design renderings in Revit using Enscape.

'please
excuse
our
MESS'



waiting room
renovation
mockup poster



reception desk

3d rendering:

revit, enscape, photoshop



waiting room

3d rendering:

revit, enscape, photoshop

College
Senior Thesis
6401 Hillcrest Ave
Dallas, TX
FALL 2018

POP-UP *illustration & interiors*

The focus for my thesis was sustainability through ocean plastics. The following are illustrations of the *Adidas* pop-up, centered around the idea of a "metamorphosis," of a brand, environment, and people.



store

-front illustration

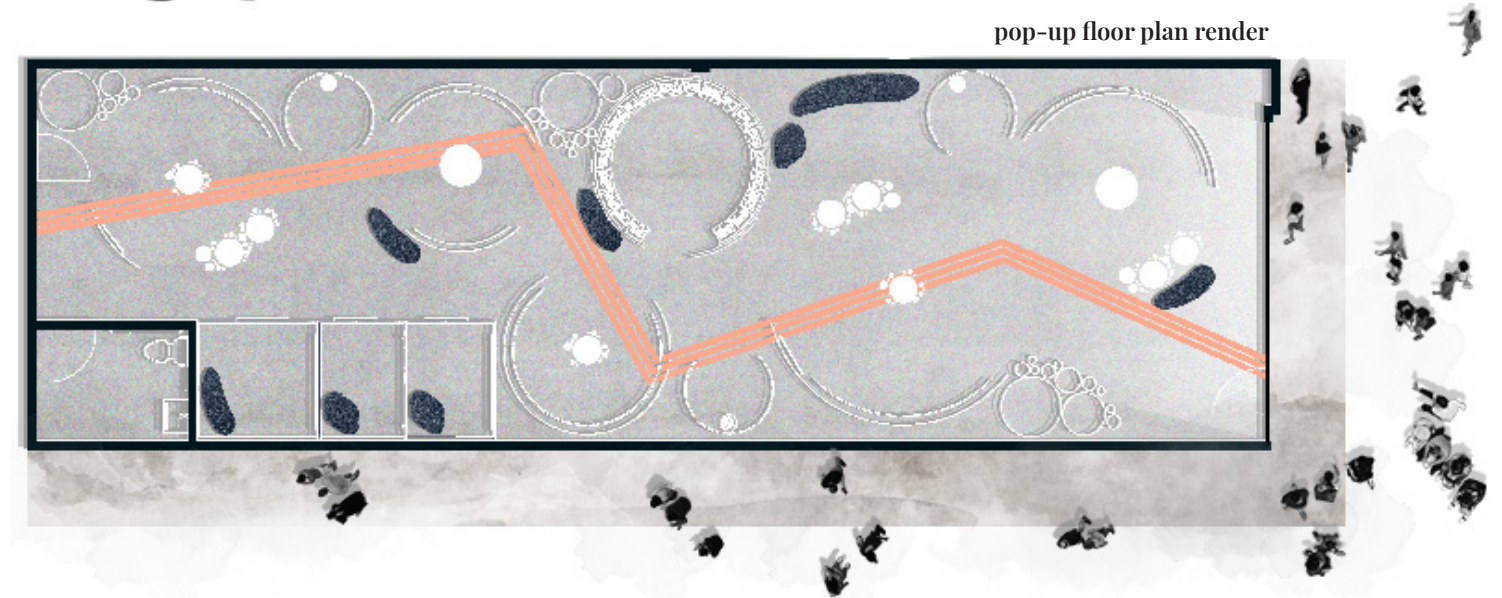
rendering: revit

, photoshop



pop-up interior

FROM THE COAST



pop-up floor plan render

TO THE COURT



pop-up interior



BRANDING

Freelance Work

Esoteric Manufacturing
Atlantic Beach, NC

SUMMER 2017

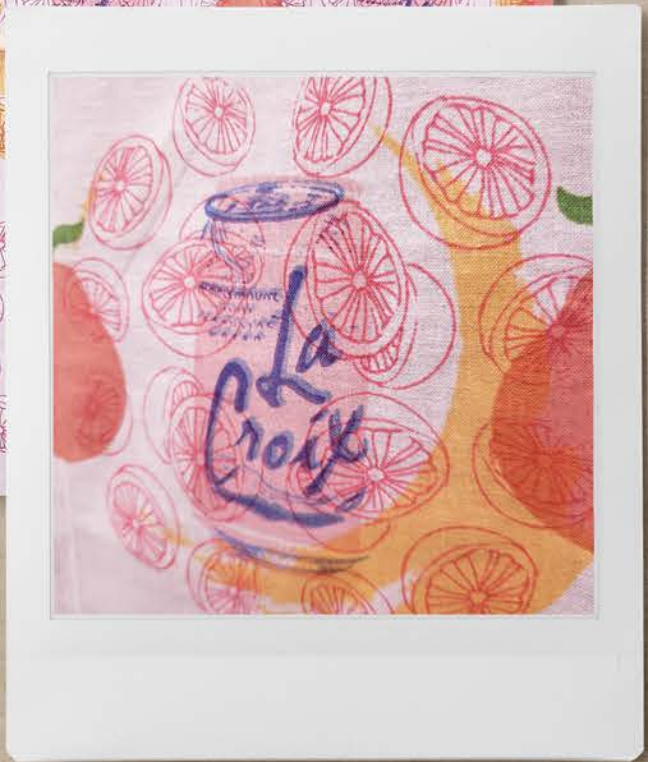
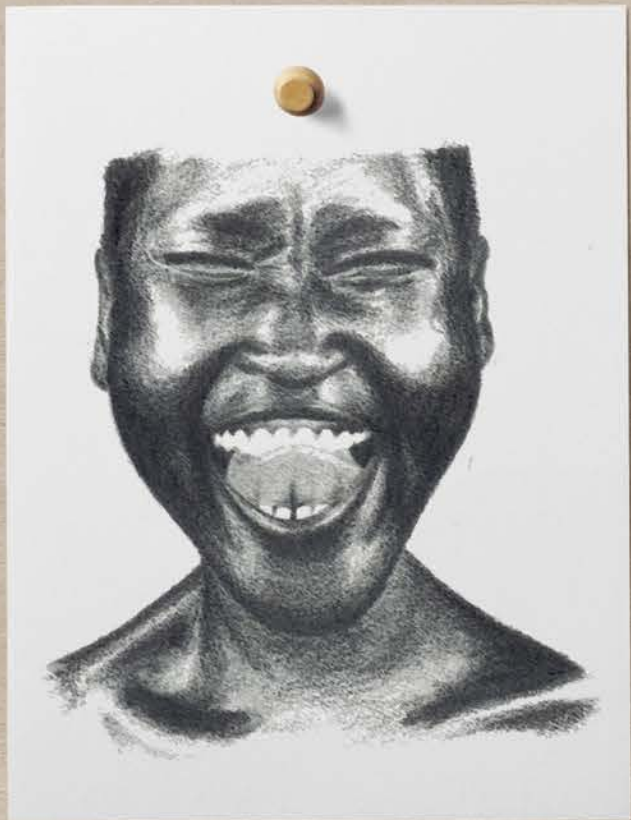
I worked with a local Atlantic Beach, NC snow & skateboard manufacturing startup to create their company logo.

Since 2017, the design continues to be a customer favourite.

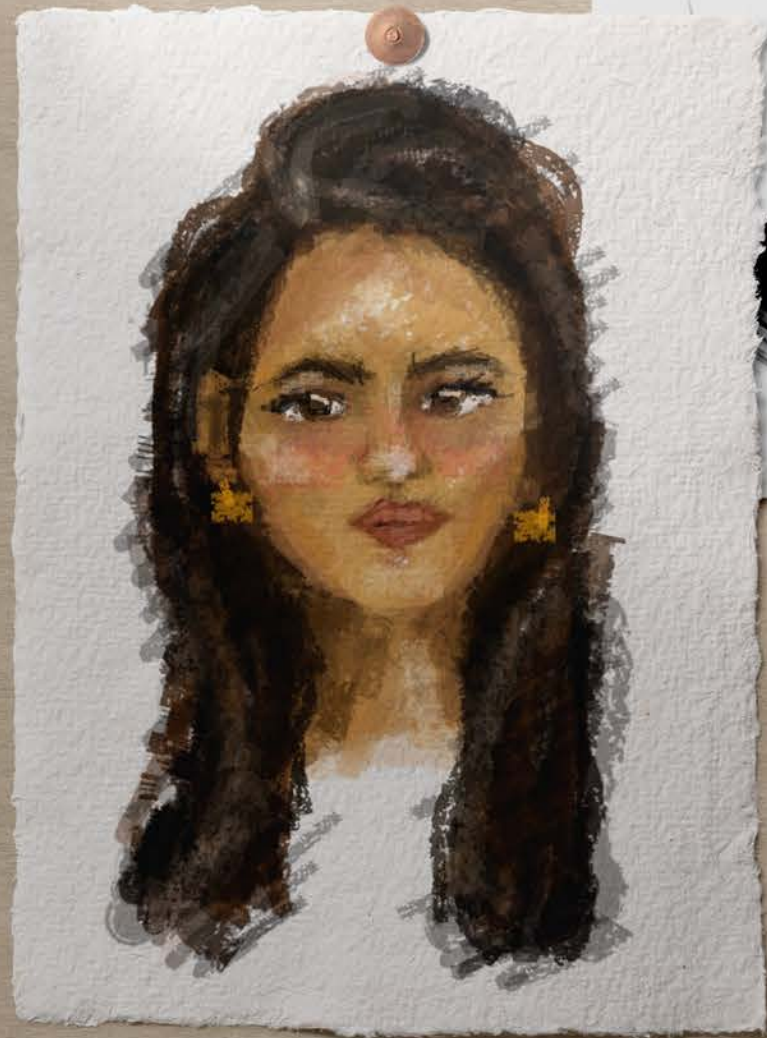


PERSONAL
WORKS

hand drawn



screen print



photograph



digital



THANK
YOU